

BUILDING WITH UBUNTU-BLOX

(RECYCLED BUILDING BLOCKS)



UBUNTU INFO PART 3

Patti Stouter

April 2012

BUILDING WITH UBUNTU-BLOX

UBUNTU-BLOX INFO PART 3

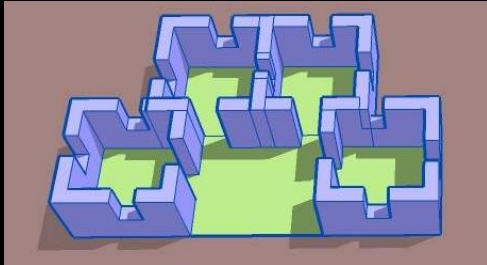
Ubuntu is an African word with a rich meaning that encompasses cooperation, humanity, and group solidarity for survival in situations with scarce resources. It is a good name for a self-help technology that can turn a problem into a resource.

Inventor and welder Harvey Lacey of Dallas, Texas invisioned the press and system to build with trash in response to the housing crisis after the Haitian earthquakes. Owen Geiger provided advice about how to reinforce the wall. Harvey has been hard at work refining and promoting and teaching ever since.

See other files in the Ubuntu Block Info series also available online soon to learn more about building with Ubuntu blocks.

This work by Patti Stouter is licensed under a [Creative Commons Attribution-ShareAlike 3.0 Unported License](https://creativecommons.org/licenses/by-sa/3.0/).

CONTENTS

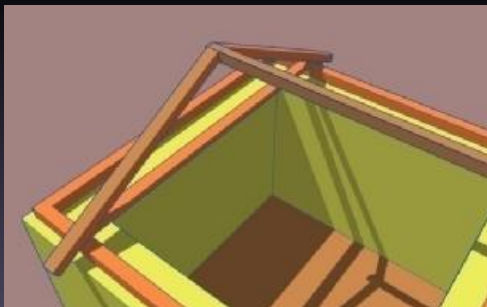


**PLANNING UBUNTU-BLOX
BUILDINGS**



FOOTING OR BASE WALL

BUILDING UBUNTU UP



FINISHING

CREDITS

PLANNING UBUNTU-BLOX BUILDINGS



Must have **straight walls**

so the wires
can be
'tensioned'-
tightened to
stiffen walls

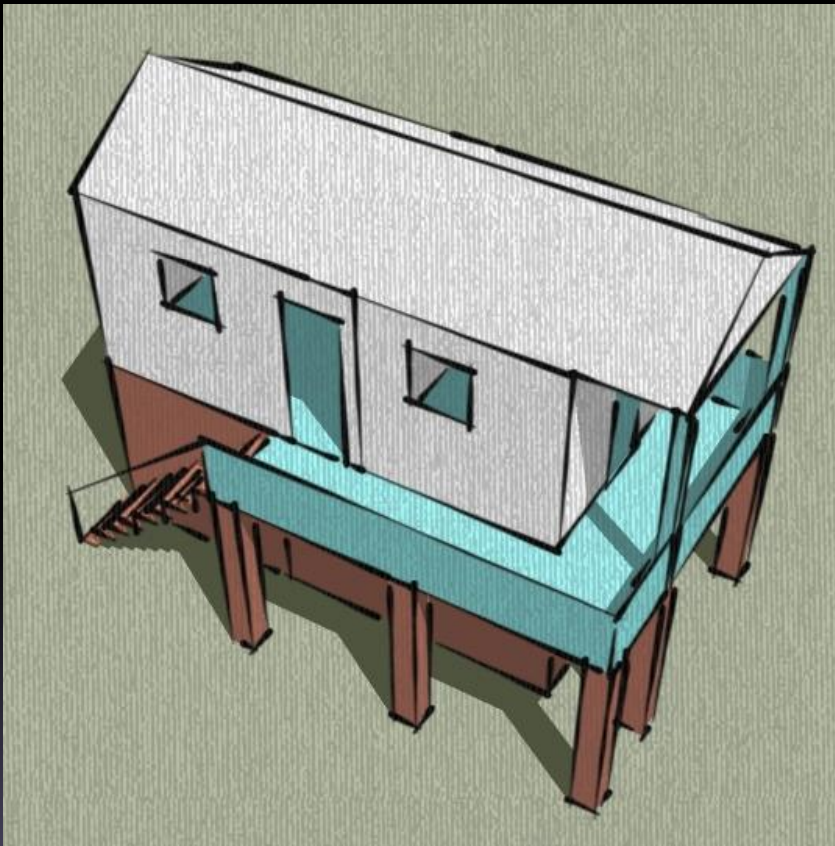


Single story for safe Ubuntu-blox buildings



Or a second story above a fire-resistant ground floor

IF BEDROOMS OPEN TO OUTSIDE STAIRS*



* In a prolonged fire Ubuntu-blox materials might release toxic gases or melt

Build Ubuntu-blox on a non-flammable base wall

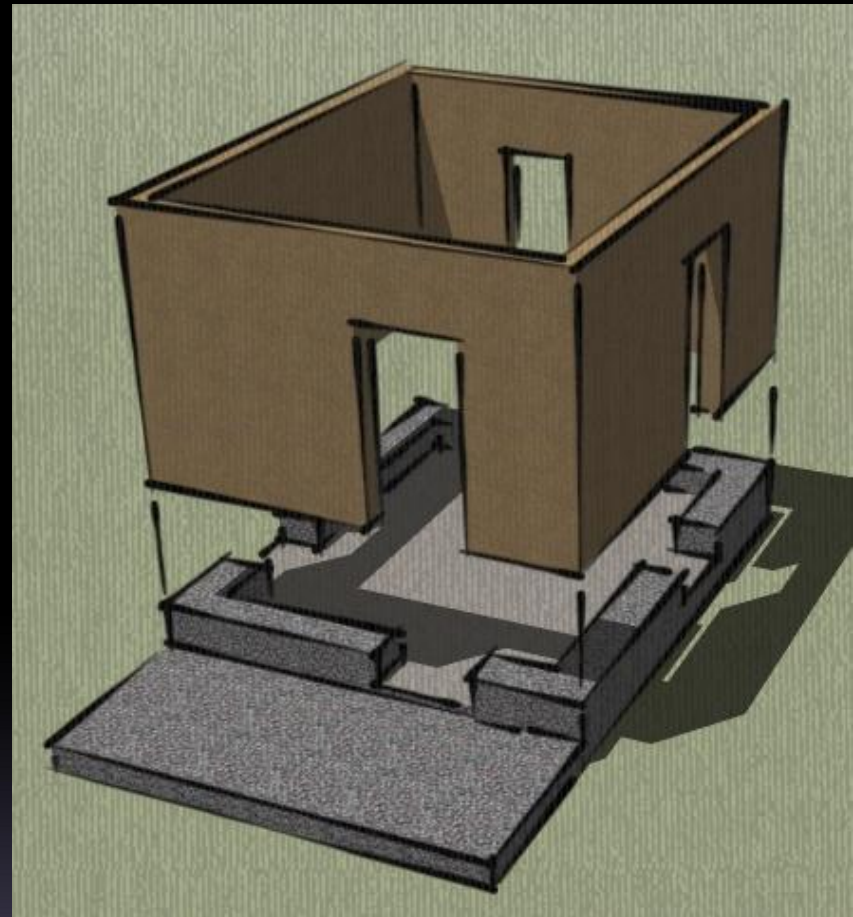


WHERE PEOPLE
COOK INSIDE

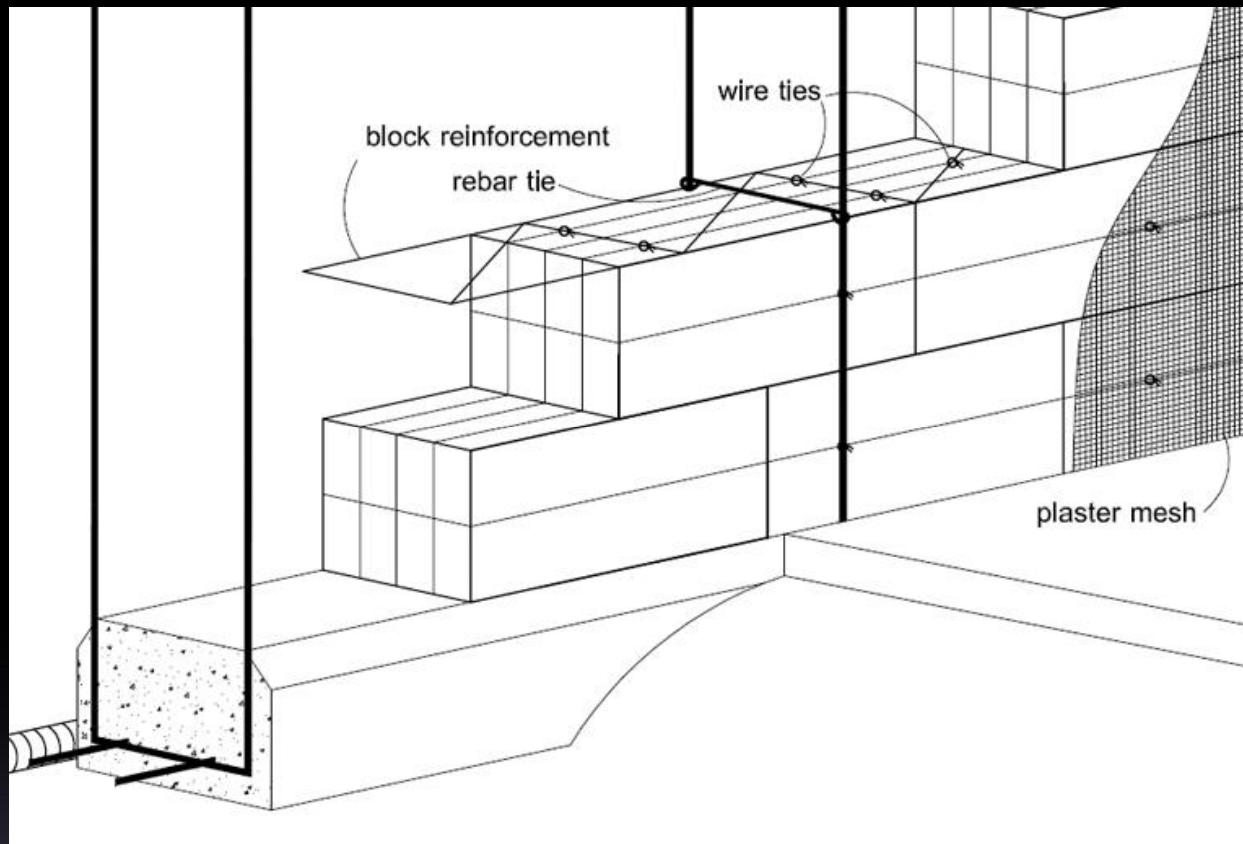


Heavy base to anchor Ubuntu-blox

against high winds



Exterior pinning stiffens Ubuntu walls



Use rebar,
pole, or
bamboo



FOOTINGS AND BASE WALLS



Rubble footings work well



With a grade beam to anchor the rebar



Familiar stone or masonry for a base wall

but anchor vertical reinforcement to it or in it

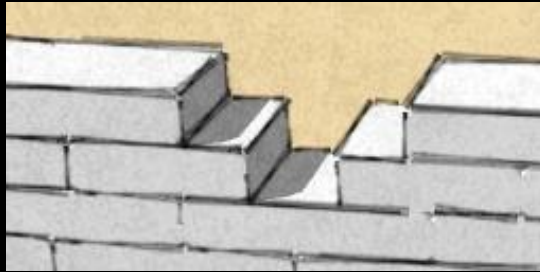


Or use gravel and earth bags

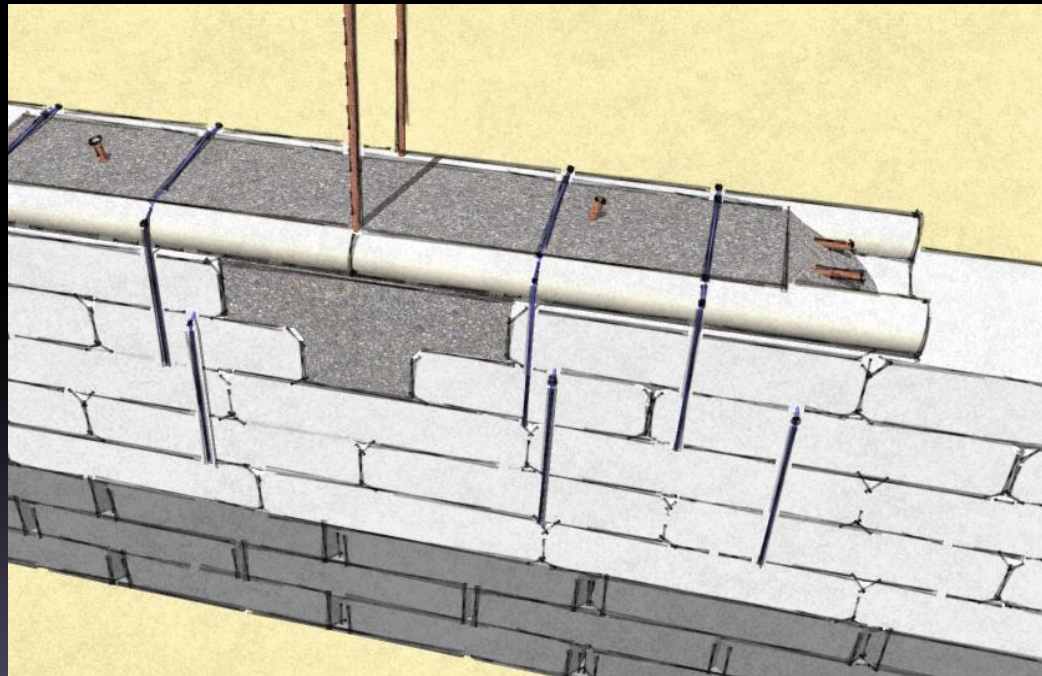
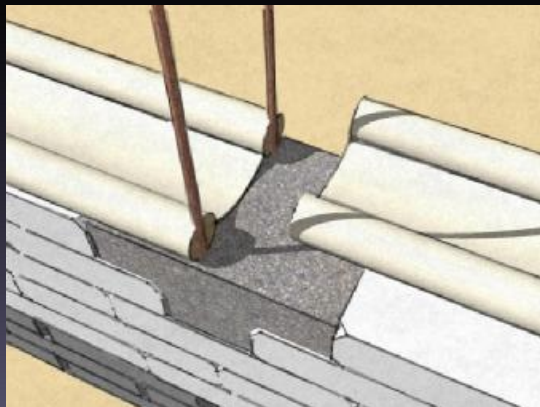
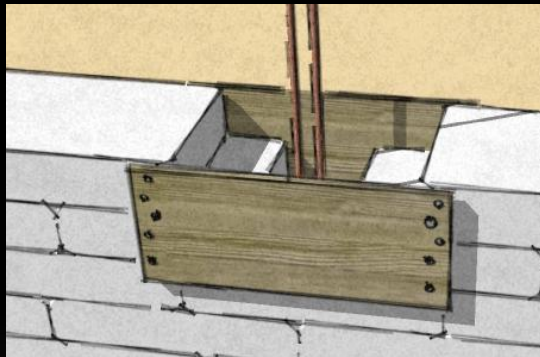
For a cheap non-flammable base wall (only gravel or stabilized earth fill where exposed to rain, snow, and leaks)



Earthbag anchors for light-weight upper wall



Leave gaps for concrete
Hammer rebar through 2 courses
Fill gaps with concrete
Add form, rebar, pour sill, strap



BUILDING UBUNTU UP

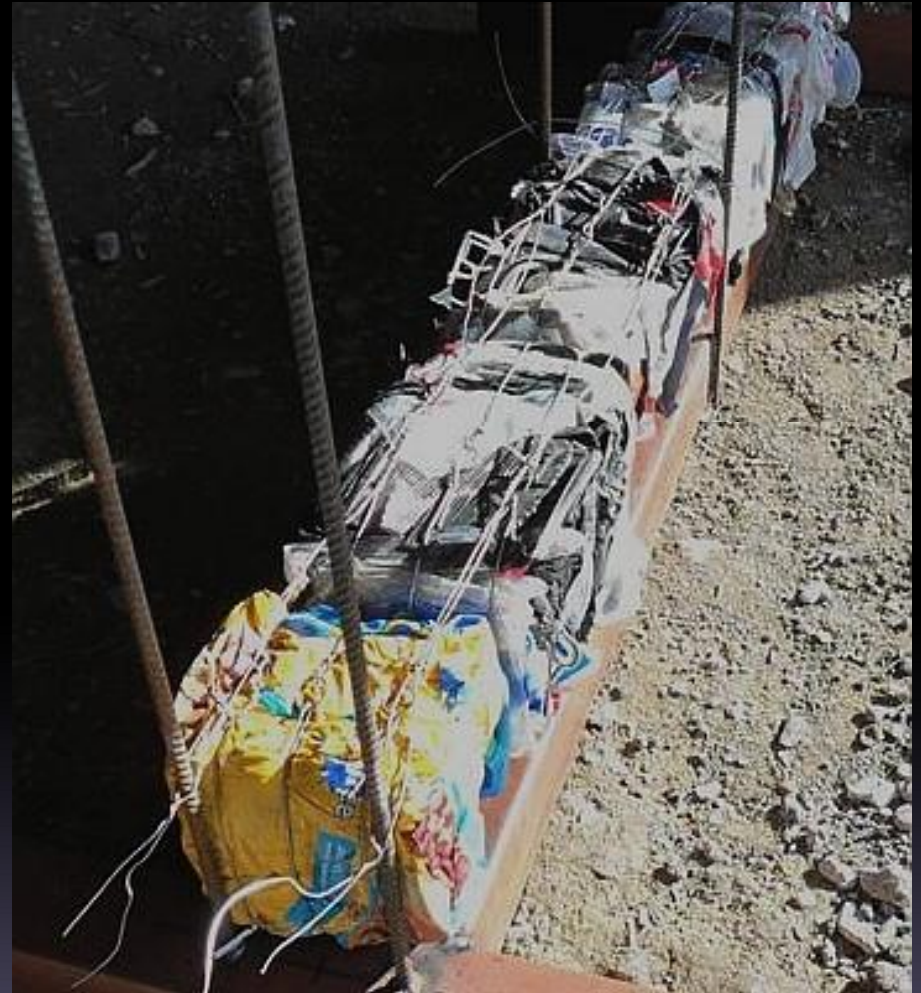


Lay blocks with one baling wire side up



Tie each block to two horizontal wires

Tie horizontal wires to rebar at corner or end



Every second course tie verticals together



After 4 courses run horizontal reinforcement

3/8 inch
rebar
Or use 11
gauge
masonry
joint
reinforce-
ment



Overlap horizontal rebar at corners



Tighten horizontal wires to stiffen building



FINISHING WELL



Anchor frames for doors and windows to rebar



Attach ring beam to vertical rebar

Screw wood ring beam at corners and overlaps



Tie roof rafters to bond beam well

Hurricane straps hold the roof on



Use a light-weight roof for earthquake safety



Plaster mesh strengthens walls for high risk areas



Use plastic fishnet or galvanized chicken wire tied to rebar

For lower risk areas plaster attaches well to recyclable blocks or to non-recyclable blocks bagged in plastic mesh

Always plaster to preserve block strength



Use Ubuntu to build the economy as well as homes

AVAILABLE MATERIALS, EASY TO LEARN



Thanks to the many individuals and organizations that have supported Harvey Lacey's Ubuntu-Blox development and testing:

Geiger Research Institute of Sustainable Building,
SMU Engineering & Humanity Week,
Memnosyne Foundation,
Haiti Communitaire,
IOM

Images used with permission:

1, 3 top & bottom, 4, 6,7, 9 right,
15,18, 22, 24- Patti Stouter

8- Wikimedia

9 left- Aman Setu School, Pune,
India

10 left- Owen Geiger

10 right- Martin Hammer, Builders
without Borders, Haiti

11, 12 left, 13 left- Paul Dubois

14- J. Kennedy, Next Aid Child
Support Center, South Africa

All other images courtesy of Harvey
Lacey and friends

A public service of www.SimpleEarthStructures.com